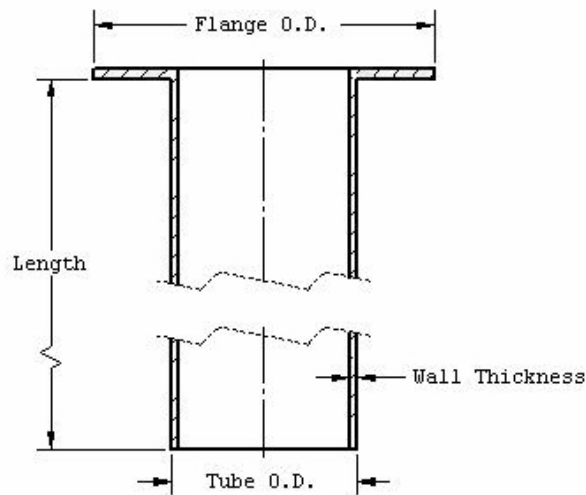
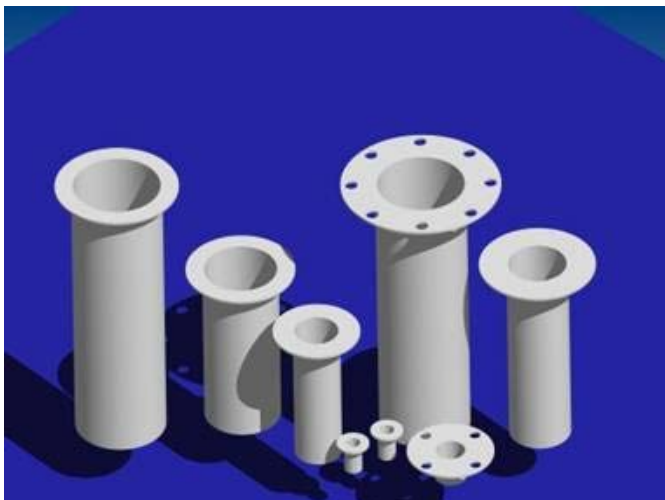


FLUOR-O-FLO®
Nozzle Liners

Solid Virgin PTFE



Nozzle Size

Standard liners fit nozzles from 1/2" to 18" pipe size. Special sizes available on request.

Length

Up to 4" nominal pipe size, lengths available to 15 feet. Over 4" nominal size, lengths available to 30".

Flange Diameter

Minimum diameter of flange of standard liners corresponds to the raised face of ANSI Class 150 flanges. Full face or other special flange diameters available on request.

Thickness

Wall thickness of standard liners increases with liner size, from a minimum of 1/16" wall up to 1/4" wall. Nonstandard wall thickness available on request. Seal thickness equal to wall thickness standard, other seal thicknesses available on request.

End

Square cut end is standard. Diagonal cut available on request.

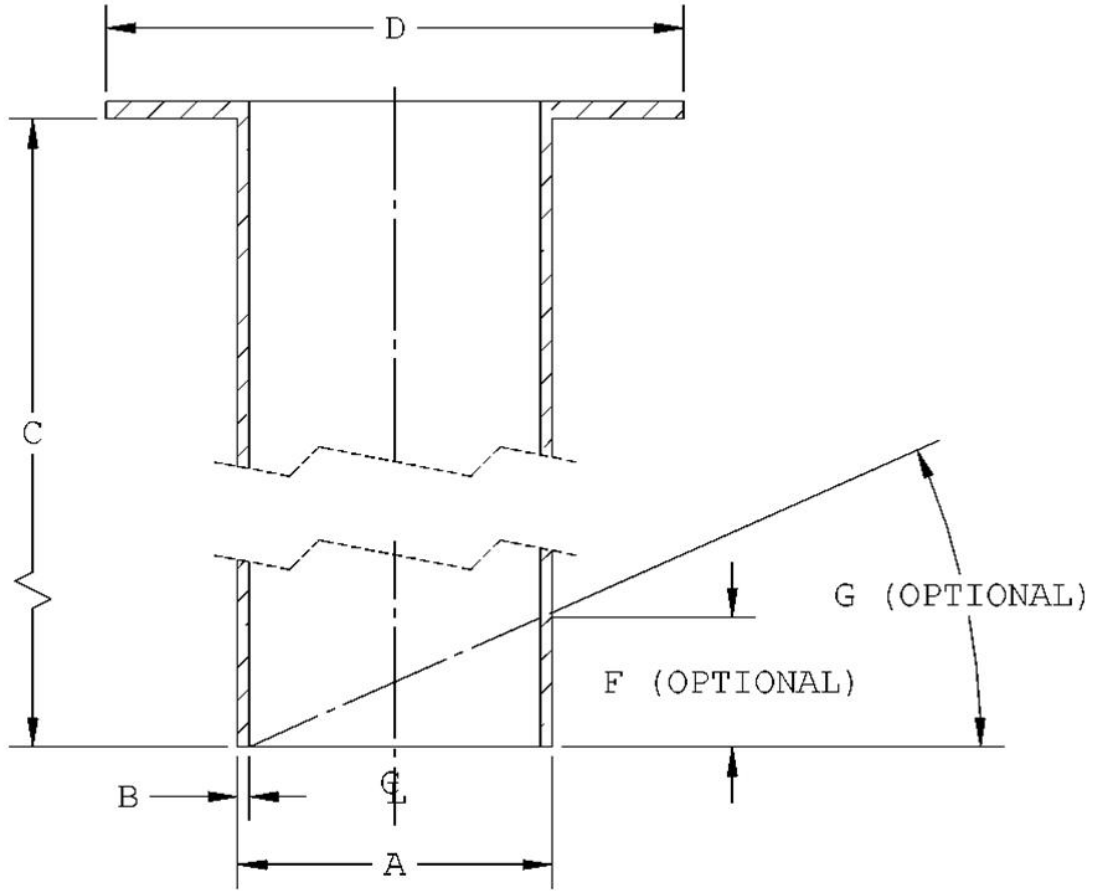
Nominal Pipe Size	Tube O.D.	Flange O.D.	(T) Wall Thickness	(L) Max. Length
1/2"	9/16"	1-3/8"	1/16"	15 ft.
3/4"	3/4"	1-11/16"	1/16"	15 ft.
1"	7/8"	2"	1/16"	15 ft.
1-1/2"	1-3/8"	2-7/8"	1/8"	15 ft.
2"	1-7/8"	3-5/8"	1/8"	15 ft.
3"	2-3/4"	5"	1/8"	15 ft.
4"	3-1/2"	6-3/16"	1/8"	15 ft.
6"	5-5/8"	8-1/2"	5/32"	30 in.
8"	7-1/2"	10-5/8"	5/32"	30 in.
10"	9-1/2"	12-3/4"	3/16"	30 in.
12"	11-1/2"	15"	7/32"	30 in.
14"	12-5/8"	16-1/4"	7/32"	30 in.
16"	14-5/8"	18-1/2"	1/4"	30 in.
18"	16-5/8"	20-1/2"	1/4"	30 in.

NOTE: Custom sizes, heavier wall thickness, diagonal cuts available on request. Contact factory

Call today for our
Nozzle Liners Sales Bulletin

For worksheet, see reverse side.

Nozzle Liner Worksheet



<u>Dimension</u>	<u>Description</u>	<u>Size</u>
------------------	--------------------	-------------

Required Data: _____

- | | | |
|---|--|---|
| A | Sleeve O.D. (smaller than the nozzle I.D. by 1/8" or more) | _____ (max.—18" pipe size) |
| B | Sleeve wall thickness | _____ |
| C | Sleeve length (excluding flange) | _____ (see chart on page 1 for max. length) |
| D | Flange O.D. | _____ (max.—21") |
| E | Flange thickness | _____ |

Optional Data: _____

- | | | |
|---|----------------------|-------|
| F | Diagonal cut
—or— | _____ |
| G | Diagonal angle | _____ |

